

## Ranja dining chair with armrest

Item 0000087683

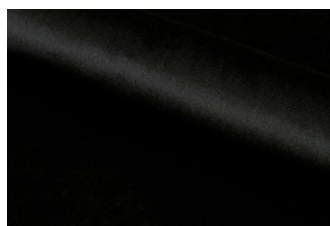
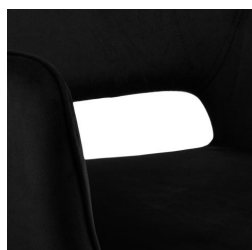
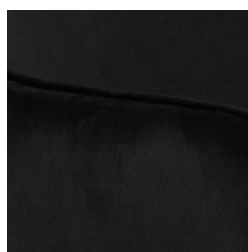


Dublin fabric black 50, Base matt black metal

- The upholstered shell offers a comfortable seat
- Sturdy metal base for durability and a modern look
- Welcoming and contemporary seating solution

**Cover:** Dublin fabric black 50

**Base:** metal matt black rough powder coated



## Details and specifications

Ranja dining chair with armrest 0000087683

Main info	
Model	Ranja
Item group	dining chair with armrest
Item no.	0000087683
EAN code	5713941131645
Size (WxDxH)	56x59.5x79 cm
CBM	0.26 cbm

Dimensions	
Width	56 cm
Depth	59.5 cm
Height	79 cm
Backrest height	35 cm
Seating width	56 cm
Seating depth	47 cm
Seating height max.	47 cm
Seating height min.	48 cm
Armrest height from floor	63.5 cm
Armrest width	5 cm
Armrest depth	39 cm
Armrest height	18 cm

Cover	
Cover type	Dublin
Colour	black
Colour code	50
Front material	Dublin fabric black 50
Back material	Dublin fabric black 50
Fire resistant	No

Factory	
Factory	85080
Country of origin	CN
Harbour	XGG
Loadability	520
MOQ Direct	100 pcs
Transport type	40' HQ
Transport medie size	68 cbm

Seat	
Foam seat 1	polyurethane
Density seat 1	22 kg/cbm

Back	
Foam back 1	polyurethane
Density back 1	22 kg/cbm

## Details and specifications

Ranja dining chair with armrest 0000087683

Base	
Colour	matt black
Material	metal
Surface treatment	rough powder coated
Core	metal
Leg shape	round
Leg height	40 cm
Floor protection	plastic foot caps

Tests & Standards	
Max weight capability main surface	110 kg
TSCA	No

Weight	
Gross weight	8 kg/pcs
Net weight	6.4 kg/pcs

## Details and specifications

Ranja dining chair with armrest 0000087683

Packaging	
Sales unit	2 pcs
Carton quantity	1 pcs
CBM	0.26 cbm
Fragile	Yes
Assembly	knock down
Square box 1	Yes
Carton 1, width	66 cm
Carton 1, depth	53 cm
Carton 1, height	77 cm
Carton 1, gross weight	8 kg/pcs
Carton 1, net weight	6.4 kg