

Eleanor dining chair with armrest

Item 0000100814 designrights®



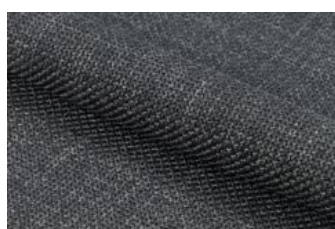
Eleanor dining chair with armrest, Basel fabric dark grey 19, base matt black rough powder coated steel, box 2 pcs

Special occasions or everyday dining, this dining chair can do both. The organic curves of the seat and slim black steel legs give the chair a feminine look. Wrapped in a structured fabric with a two-tone effect, the dark grey cover makes the chair interesting to look at. Such a chair makes a great addition to soft interiors, where it blends effortlessly.

- Organically shaped seat with curves creates a contemporary and feminine look
- Upholstered in a structured dark grey fabric with a two-tone effect
- Slim black rough powder coated metal legs as a contrasting element
- Set of 2 reduces the amount of packaging
- Danish design exclusively protected for Actona
- FSC™ certified

Cover: Basel fabric dark grey 19

Base: steel matt black rough powder coated



Details and specifications

Eleanor dining chair with armrest 0000100814

Main info	
Model	Eleanor
Item group	dining chair with armrest
Item no.	0000100814
EAN code	5713941292056
CBM	0.21 cbm

Dimensions	
Width	56 cm
Depth	54.5 cm
Height	80.5 cm
Backrest height	38 cm
Seating width	48 cm
Seating depth	46 cm
Seating height max.	48 cm
Armrest height from floor	62 cm
Armrest width	5 cm
Armrest depth	27 cm
Armrest height	15 cm

Cover	
Cover type	Basel
Colour	dark grey
Colour code	19
Front material	Basel fabric dark grey 19
Back material	Basel fabric dark grey 19
Fire resistant	No

Factory	
Factory	84864
Country of origin	CN
Harbour	YTN
Loadability	638
MOQ Direct	100 pcs
Transport type	40' HQ
Transport medie size	68 cbm

Seat	
Foam seat 1	polyurethane
Density seat 1	30 kg/cbm
Loose seat cushion	No
Reversible seat cushion	No

Back	
Foam back 1	polyurethane
Density back 1	25 kg/cbm

Details and specifications

Eleanor dining chair with armrest 0000100814

Base	
type	4-legs
profile	rectangular tapered
Colour	matt black
Material	steel
Surface treatment	rough powder coated
Core	steel
Leg height	43 cm
Floor protection	plastic foot caps

Tests & Standards	
Max weight capability main surface	110 kg
TSCA	No

Weight	
Gross weight	8.3 kg/pcs
Net weight	6.6 kg/pcs

Details and specifications

Eleanor dining chair with armrest 0000100814

Packaging	
Sales unit	2 pcs
Carton quantity	1 pcs
CBM	0.21 cbm
Fragile	Yes
Assembly	partly
Square box 1	Yes
Carton 1, width	58 cm
Carton 1, depth	59 cm
Carton 1, height	58 cm
Carton 1, gross weight	8.3 kg/pcs
Carton 1, net weight	6.6 kg