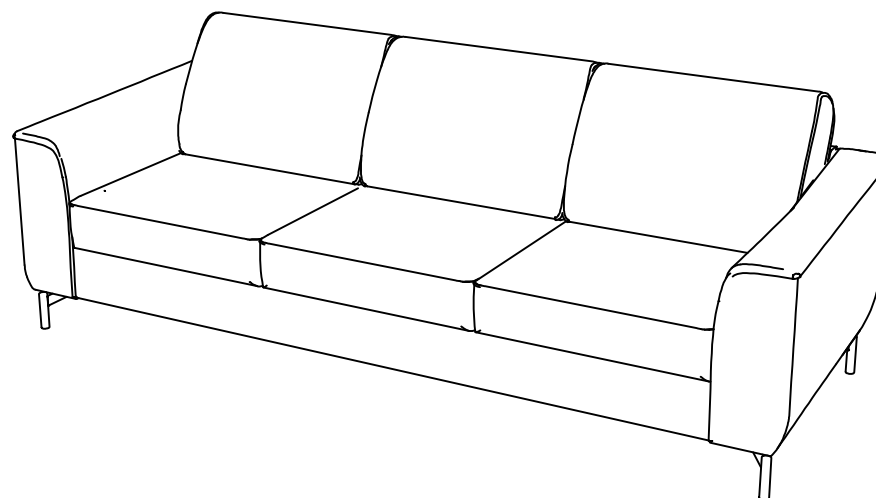


NOW TAKE A SEAT,  
ENJOY AND PLEASE READ OUR PASSPORT  
FOR MAINTAINING YOUR SOFA PROPERLY

ALCONA

MANUAL



**FR**

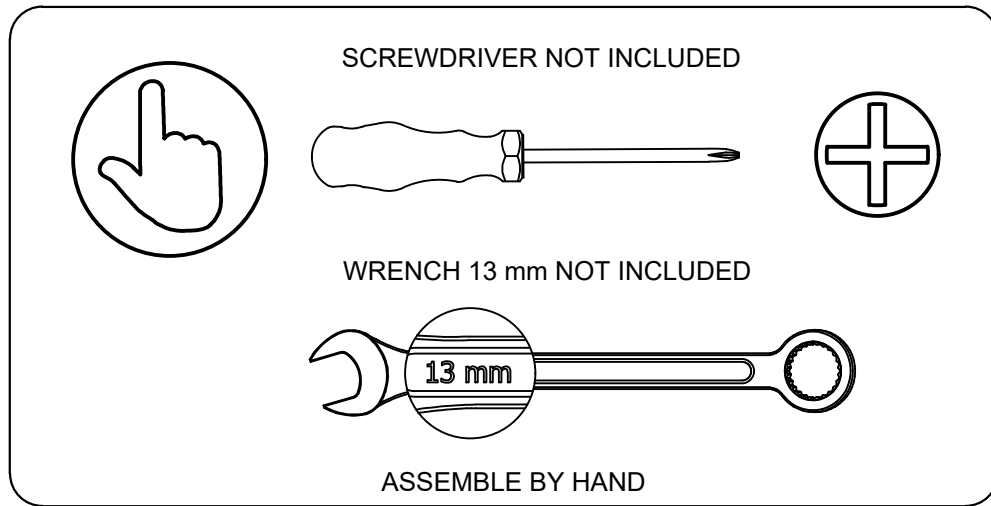
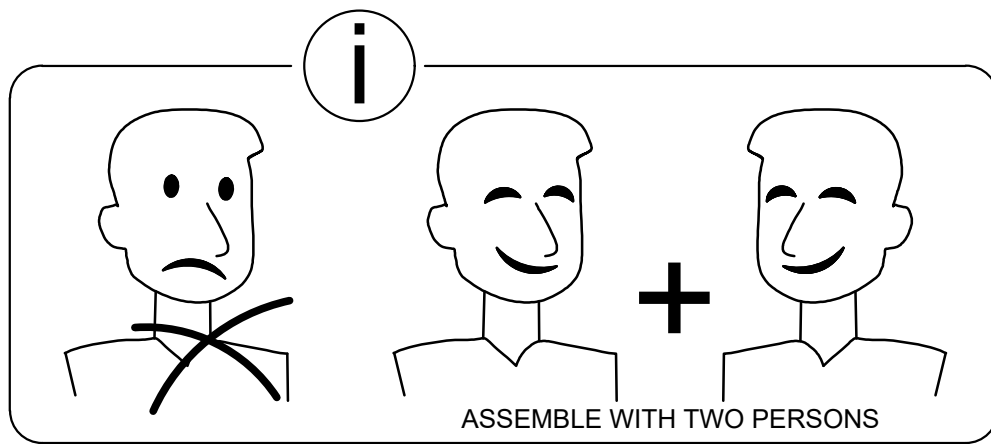
**Pensez à donner ou recycler.**

  ou  ou 

Association Magasin Déchèterie

<https://quefairedemesdechets.fr>



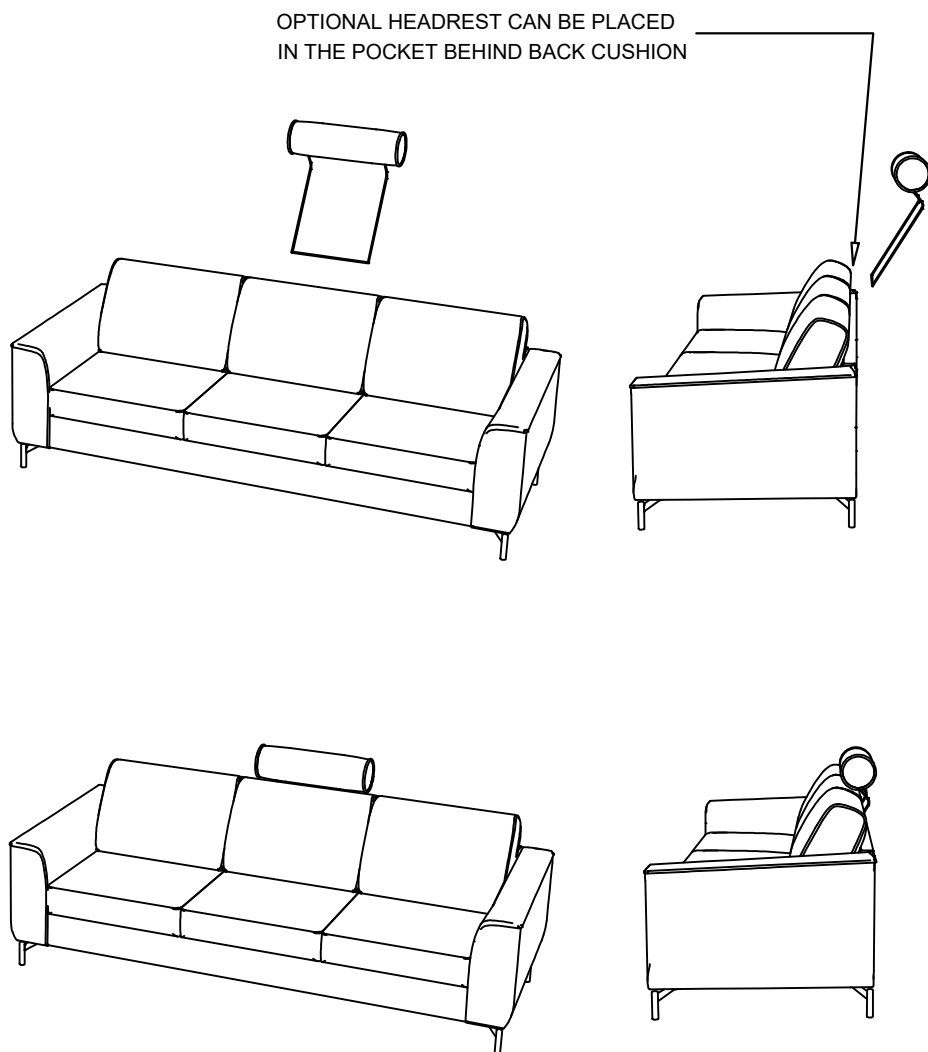


## ELEMENTS

---

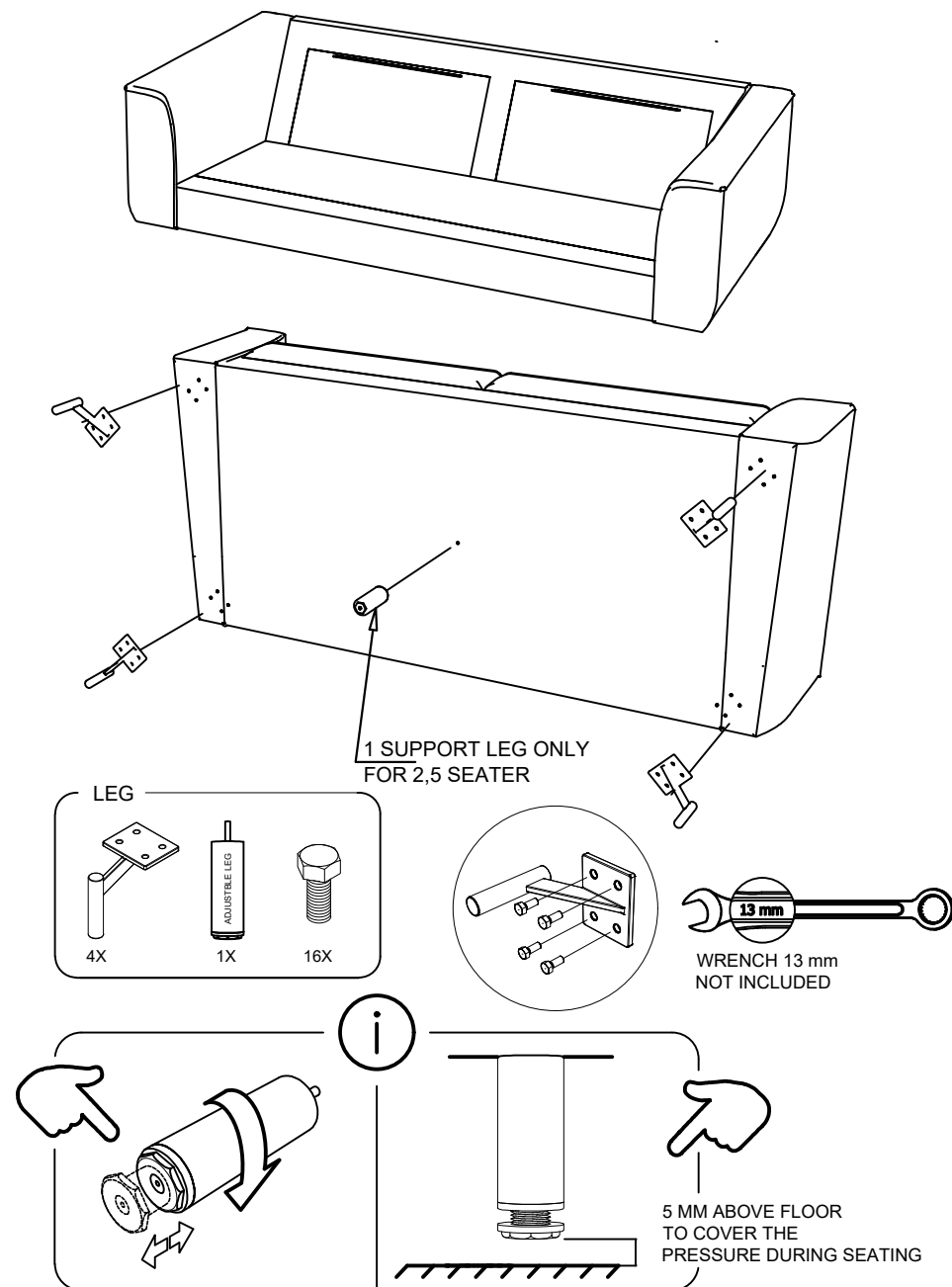
## ELEMENTS

### OPTIONAL HEADREST



## ELEMENTS

2 / 2,5 / SEATER TWO ARMS



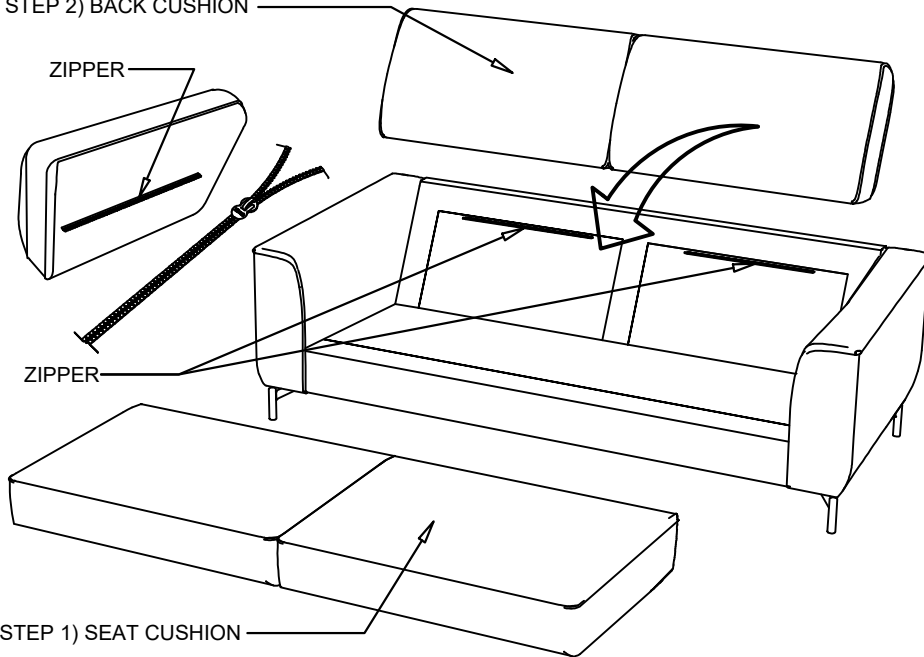
## ELEMENTS

### 2 / 2,5 SEATER TWO ARMS

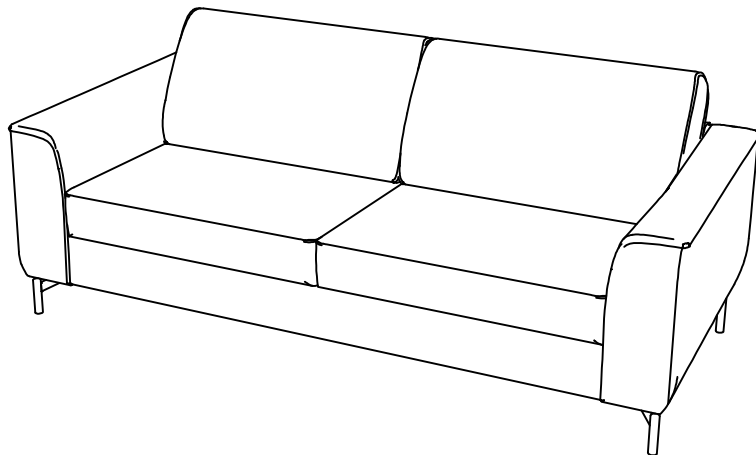
PUT ELEMENT ON HIS FEET, AND ASSEMBLE THE CUSHIONS  
BACK CUSHIONS ARE FIXED BY ZIPPER ON BACK  
OF CUSHION

2 SEATER : 2 BACK AND SEAT CUSHIONS  
2,5 SEATER : 2 BACK AND SEAT CUSHIONS

#### STEP 2) BACK CUSHION



#### STEP 1) SEAT CUSHION



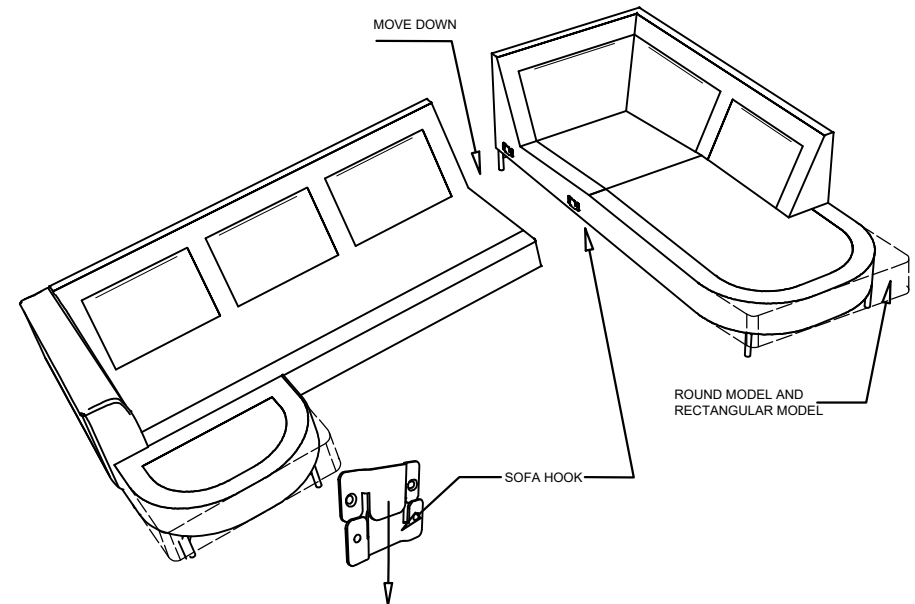
## ELEMENTS

### 3 SEATER ONE ARM + LONG CHAIR + OTTOMANE

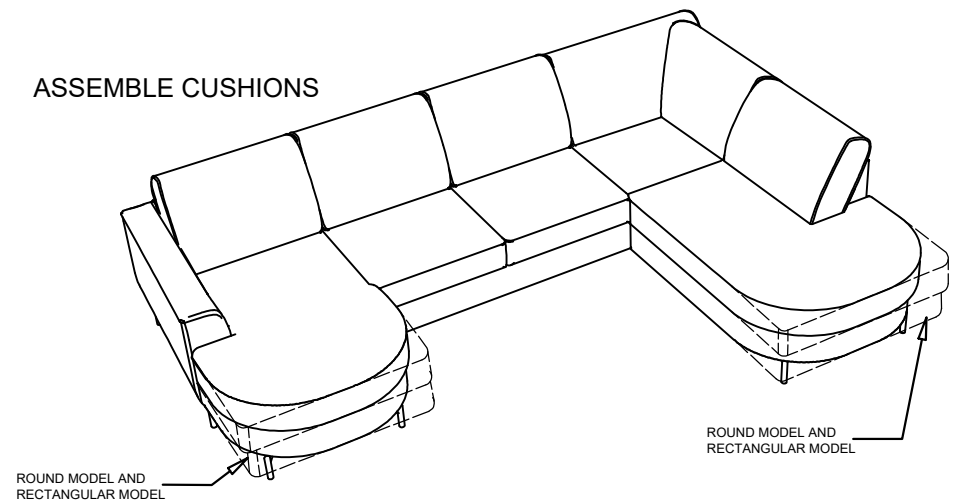
FOR ASSEMBLING LEGS ELEMENTS FOLLOW INSTRUCTION  
AS MENTION BEFORE

#### ASSEMBLE SOFA TO OTTOMANE

STEP 1) MOVE SOFA TO OTTOMANE  
STEP 2) LIFT SOFA UP ON ONE SIDE  
STEP 3) LOWER THE SOFA INTO THE HOOKS

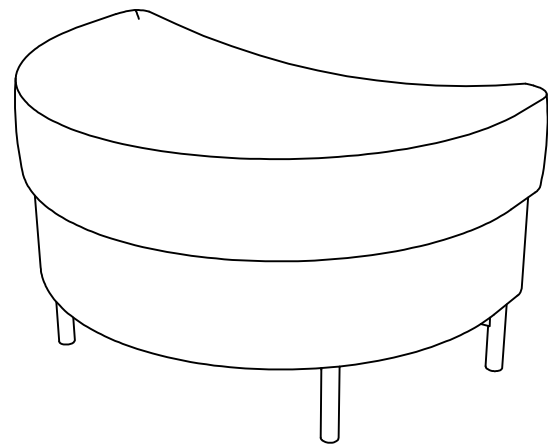


#### ASSEMBLE CUSHIONS



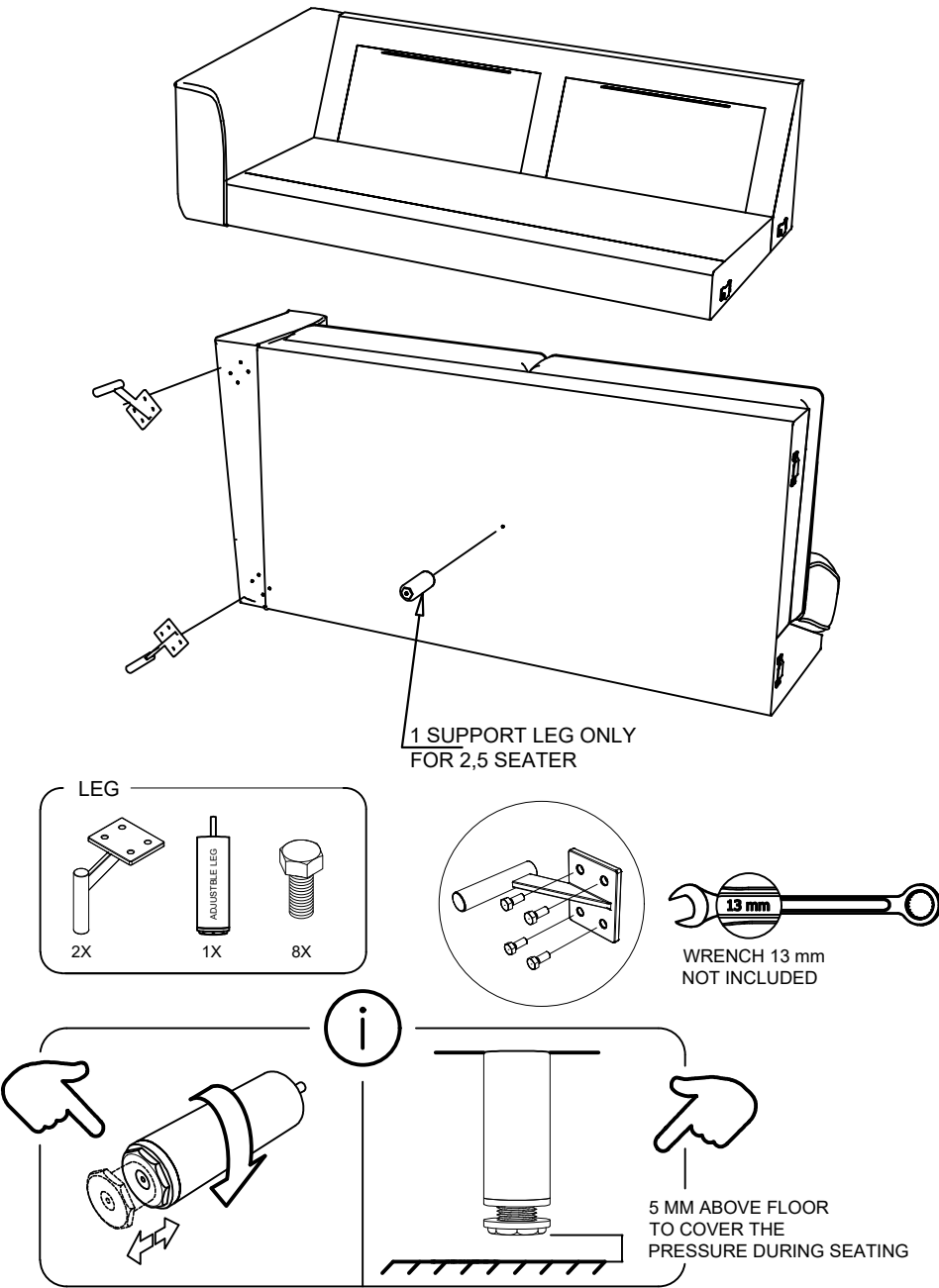
ELEMENTS

HOCKER HALF ROUND



ELEMENTS

2 / 2,5 / SEATER ONE ARM



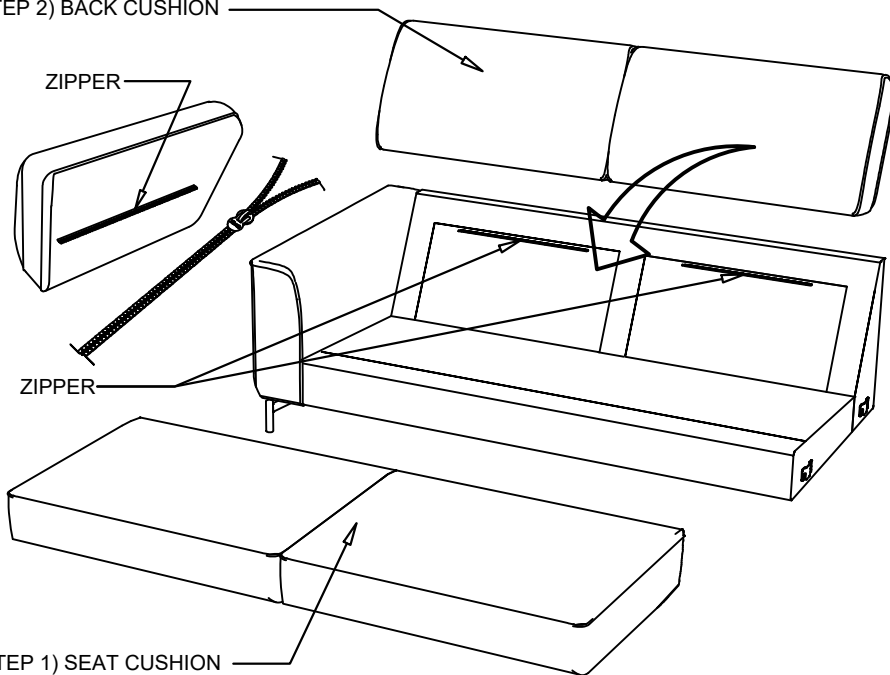
## ELEMENTS

### 2 / 2,5 SEATER ONE ARM

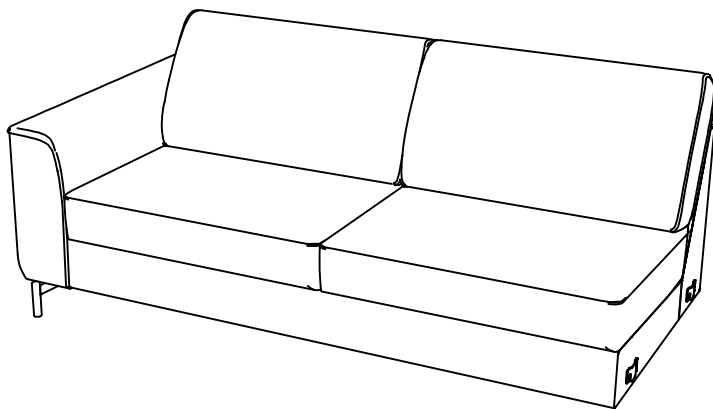
PUT ELEMENT ON HIS FEET, AND ASSEMBLE THE CUSHIONS  
BACK CUSHIONS ARE FIXED BY ZIPPER ON BACK  
OF CUSHION

2 SEATER : 2 BACK AND SEAT CUSHIONS  
2,5 SEATER : 2 BACK AND SEAT CUSHIONS

#### STEP 2) BACK CUSHION

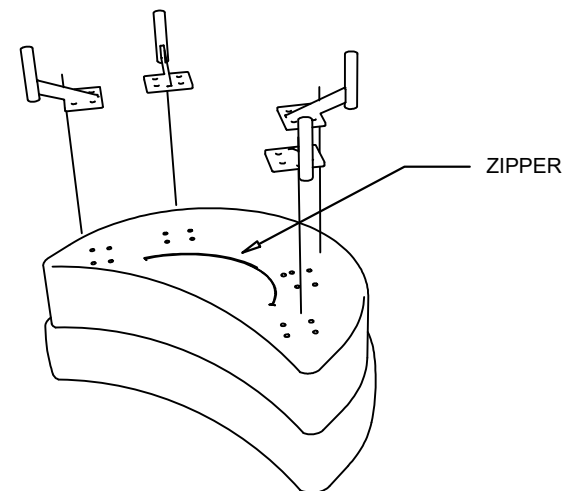
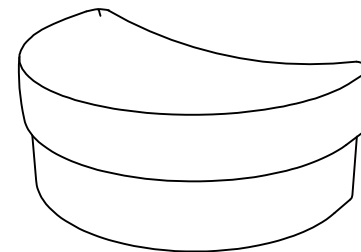


#### STEP 1) SEAT CUSHION

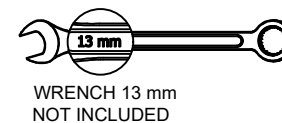
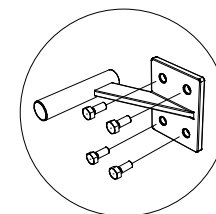
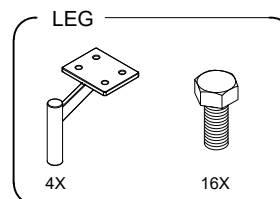


## ELEMENTS

### HOCKER HALF ROUND

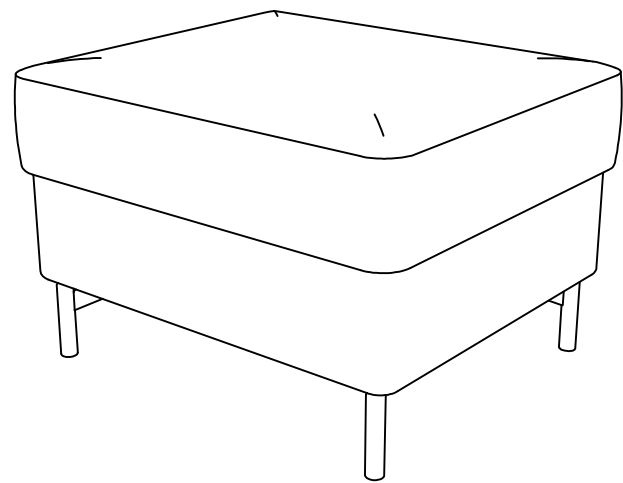


ATTENTION:  
LEGS ARE STORED BEHIND ZIPPER  
ON BOTTOM SIDE HOCKER



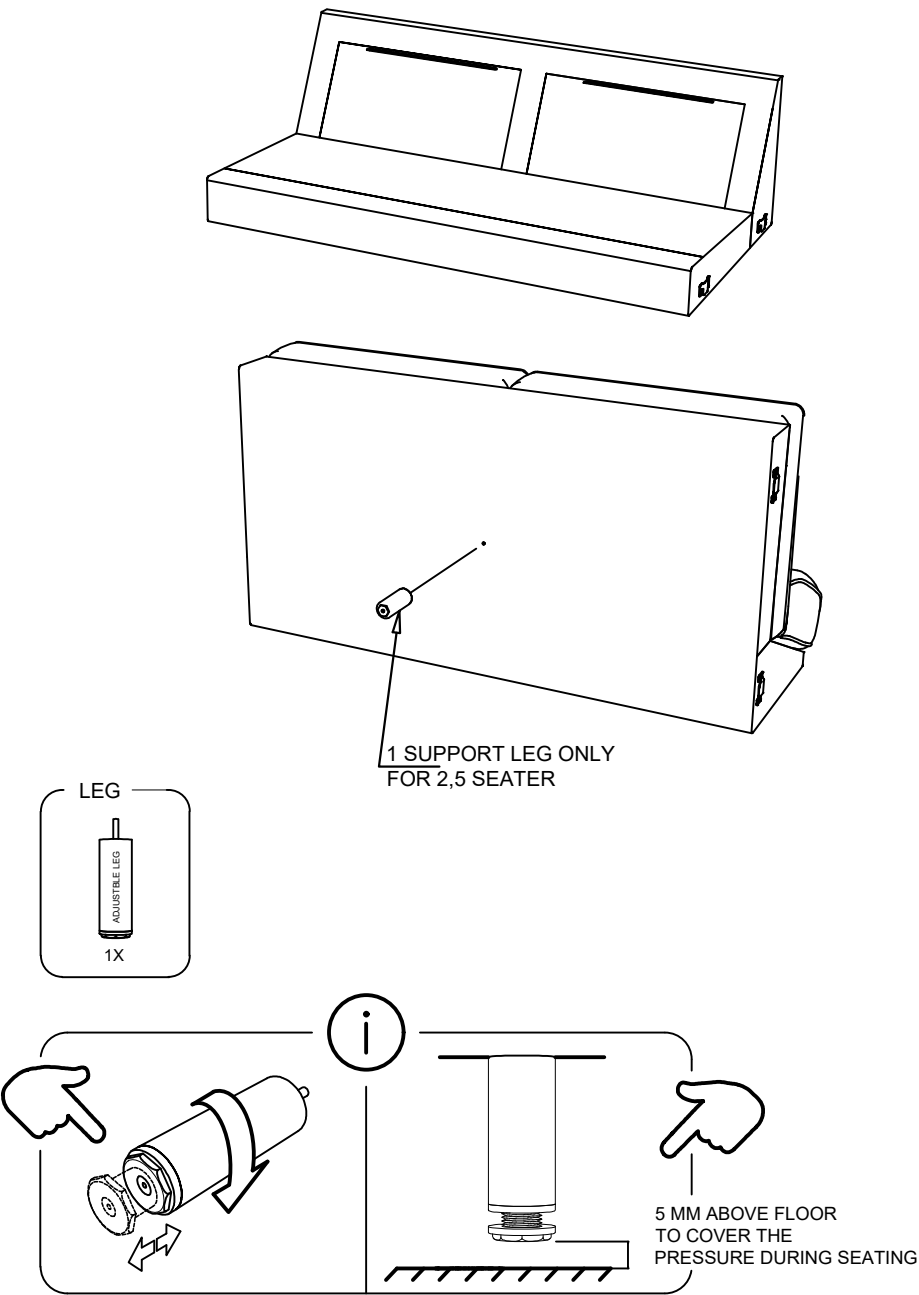
ELEMENTS

HOCKER RECTANGULAR



ELEMENTS

2 / 2,5 / SEATER NO ARMS



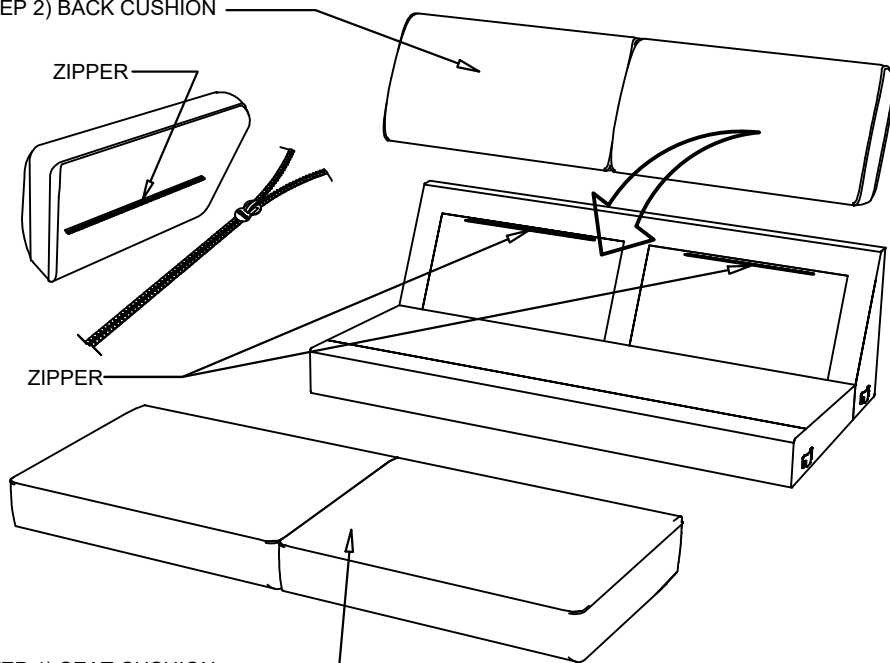
## ELEMENTS

### 2 / 2,5 SEATER NO ARMS

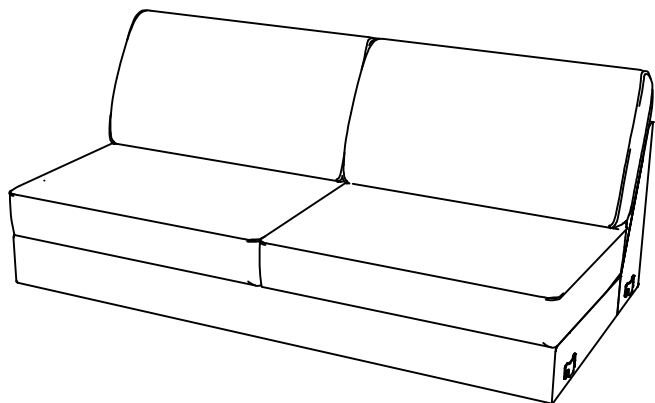
PUT ELEMENT ON HIS FEET, AND ASSEMBLE THE CUSHIONS  
BACK CUSHIONS ARE FIXED BY ZIPPER ON BACK  
OF CUSHION

2 SEATER : 2 BACK AND SEAT CUSHIONS  
2,5 SEATER : 2 BACK AND SEAT CUSHIONS

#### STEP 2) BACK CUSHION

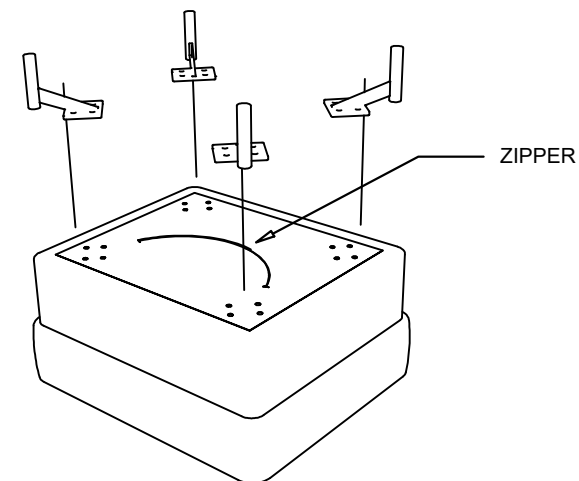
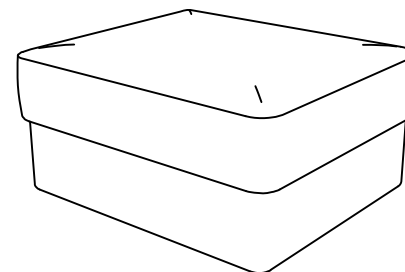


#### STEP 1) SEAT CUSHION

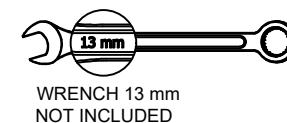
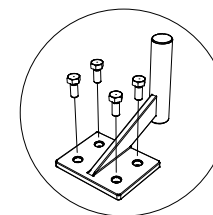
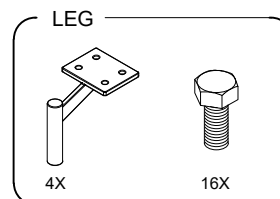


## ELEMENTS

### HOCKER RECTANGULAR



ATTENTION:  
LEGS ARE STORED BEHIND ZIPPER  
ON BOTTOM SIDE HOCKER

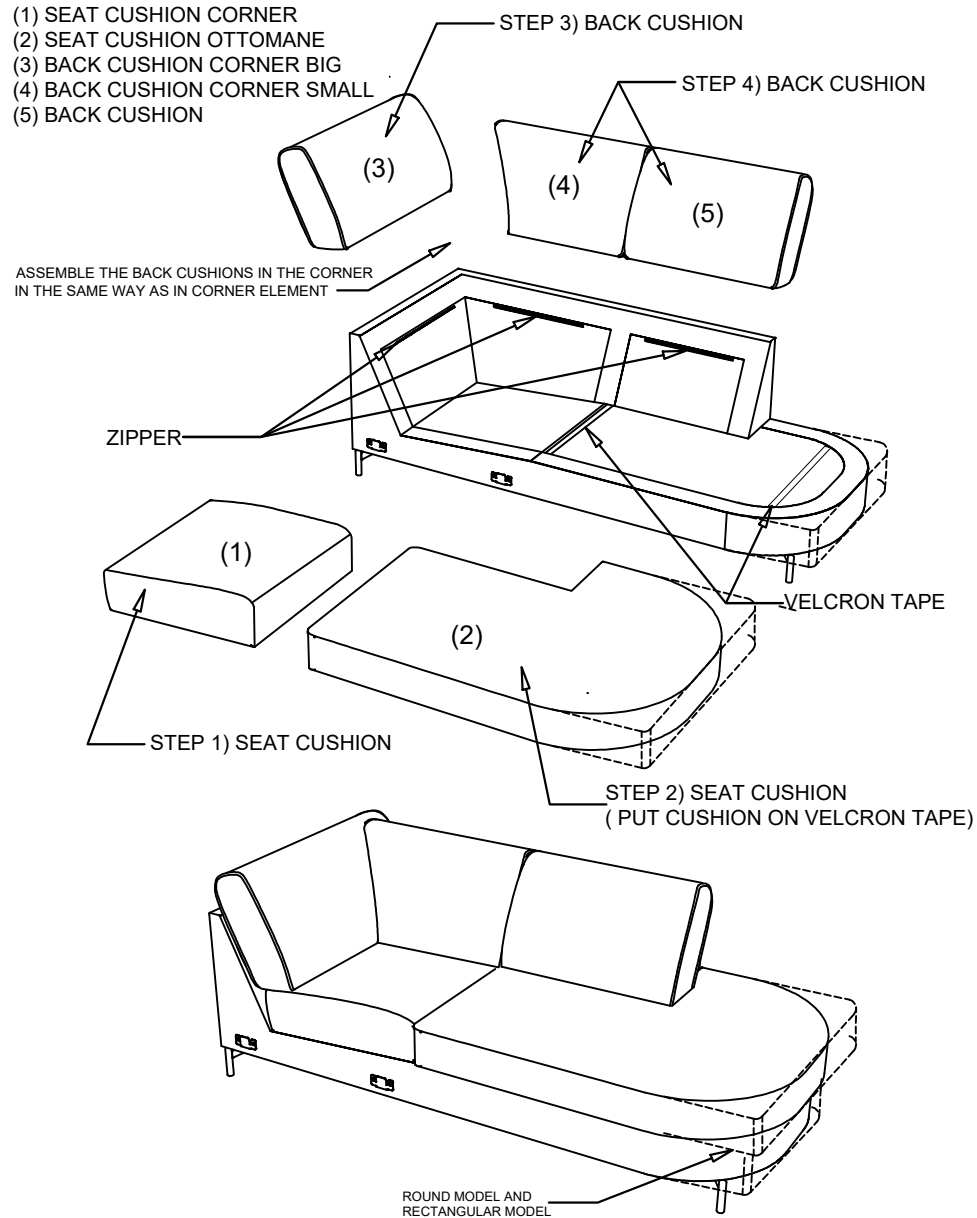




## ELEMENTS

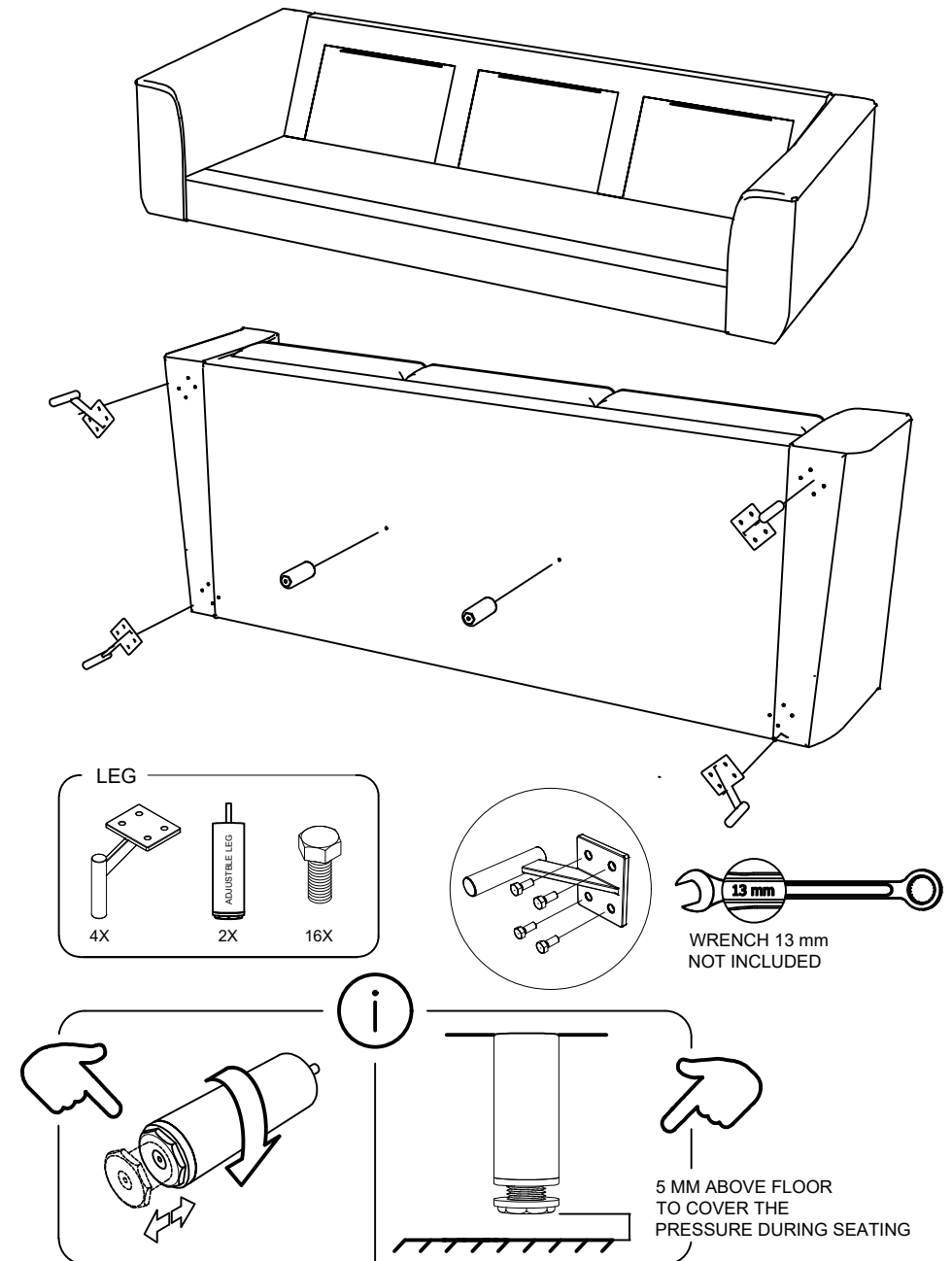
### OTTOMANE

PUT ELEMENT ON HIS FEET, AND ASSEMBLE THE CUSHIONS  
BACK CUSHIONS ARE FIXED BY ZIPPER ON BACK  
OF CUSHION



## ELEMENTS

### 3 SEATER TWO ARMS



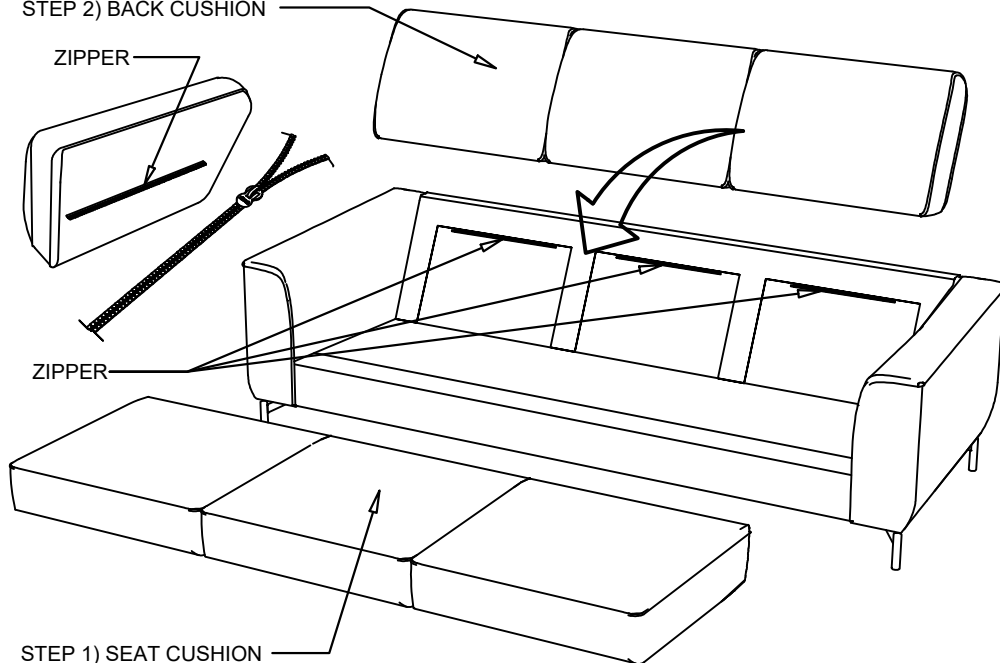
## ELEMENTS

### 3 SEATER TWO ARMS

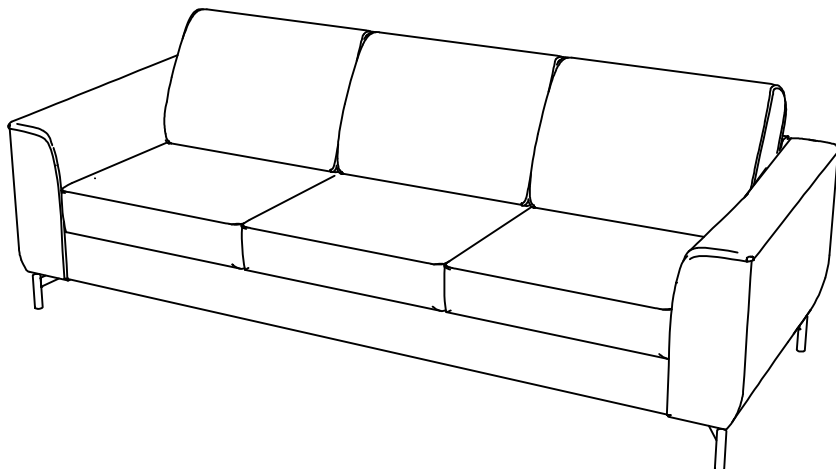
PUT ELEMENT ON HIS FEET, AND ASSEMBLE THE CUSHIONS  
BACK CUSHIONS ARE FIXED BY ZIPPER ON BACK  
OF CUSHION

3 SEATER : 3 BACK AND SEAT CUSHIONS

#### STEP 2) BACK CUSHION

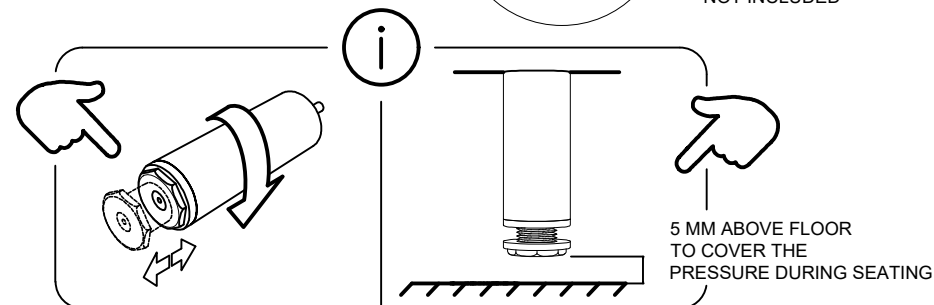
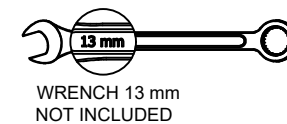
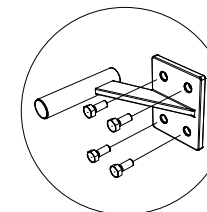
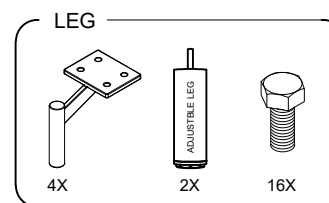
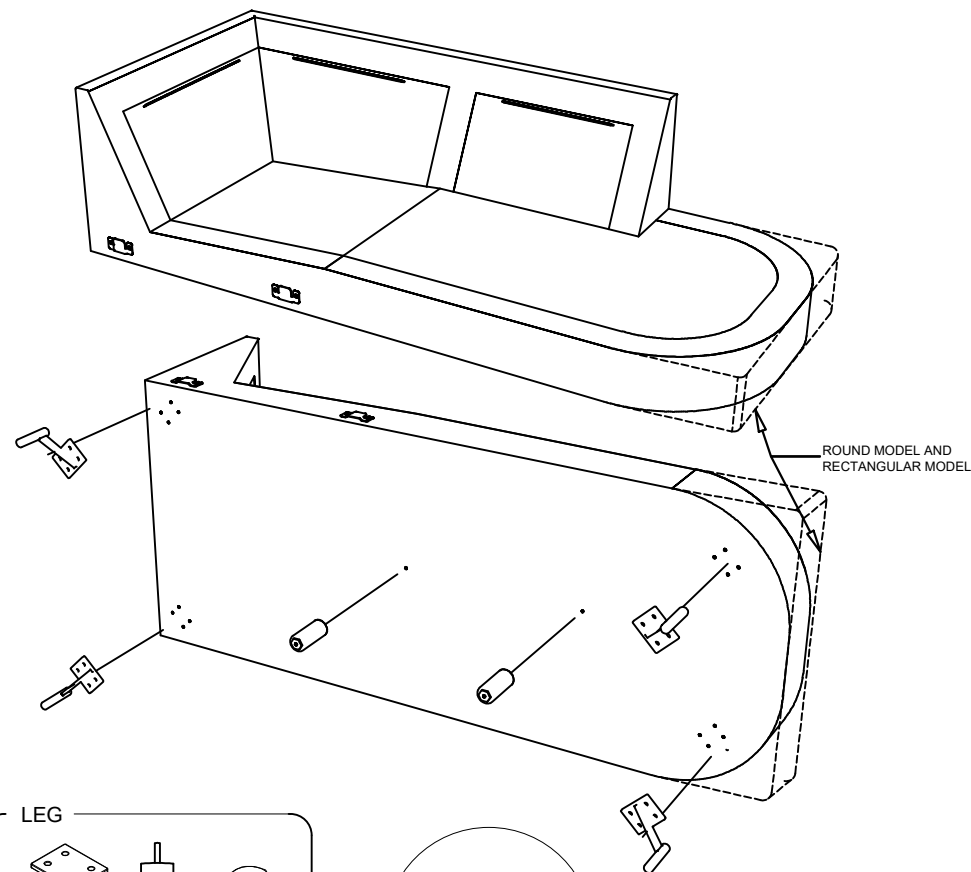


#### STEP 1) SEAT CUSHION



## ELEMENTS

### OTTOMANE

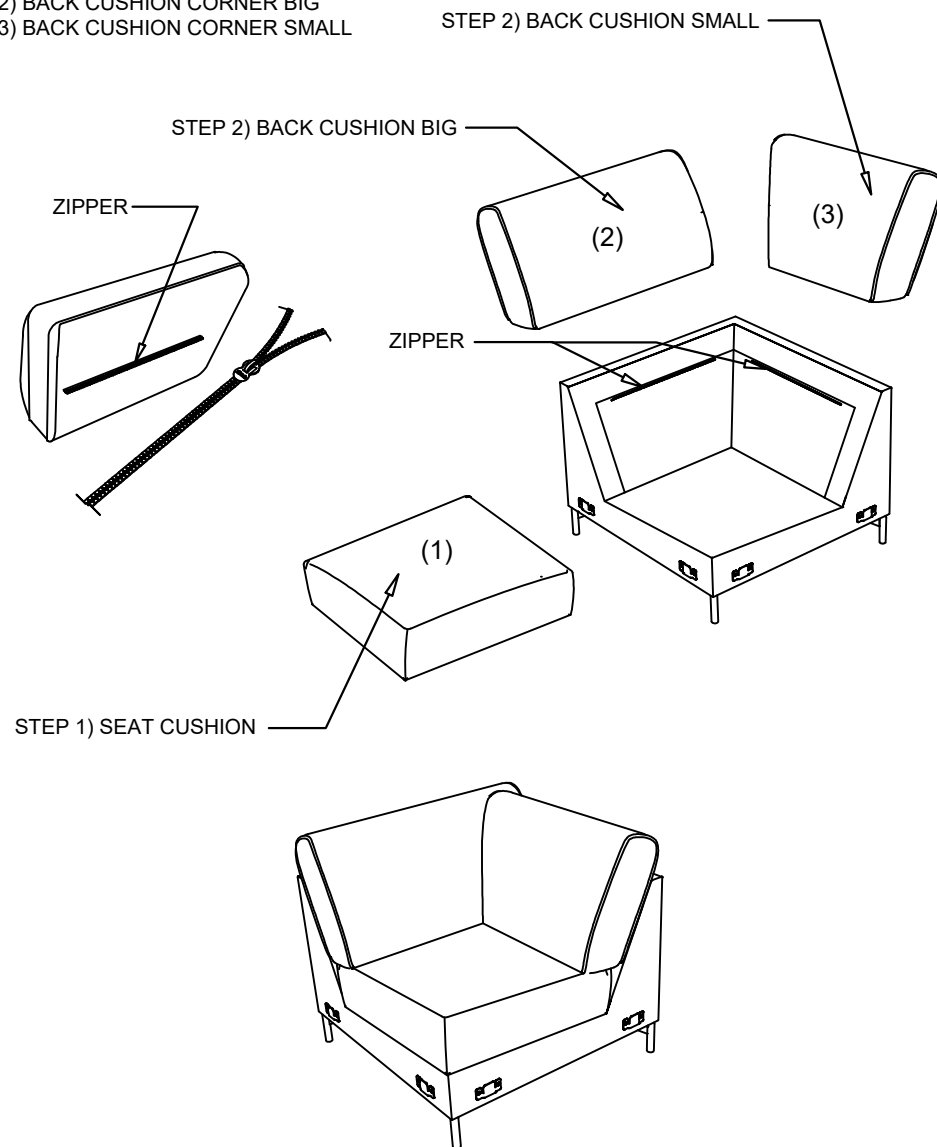


## ELEMENTS

### CORNER

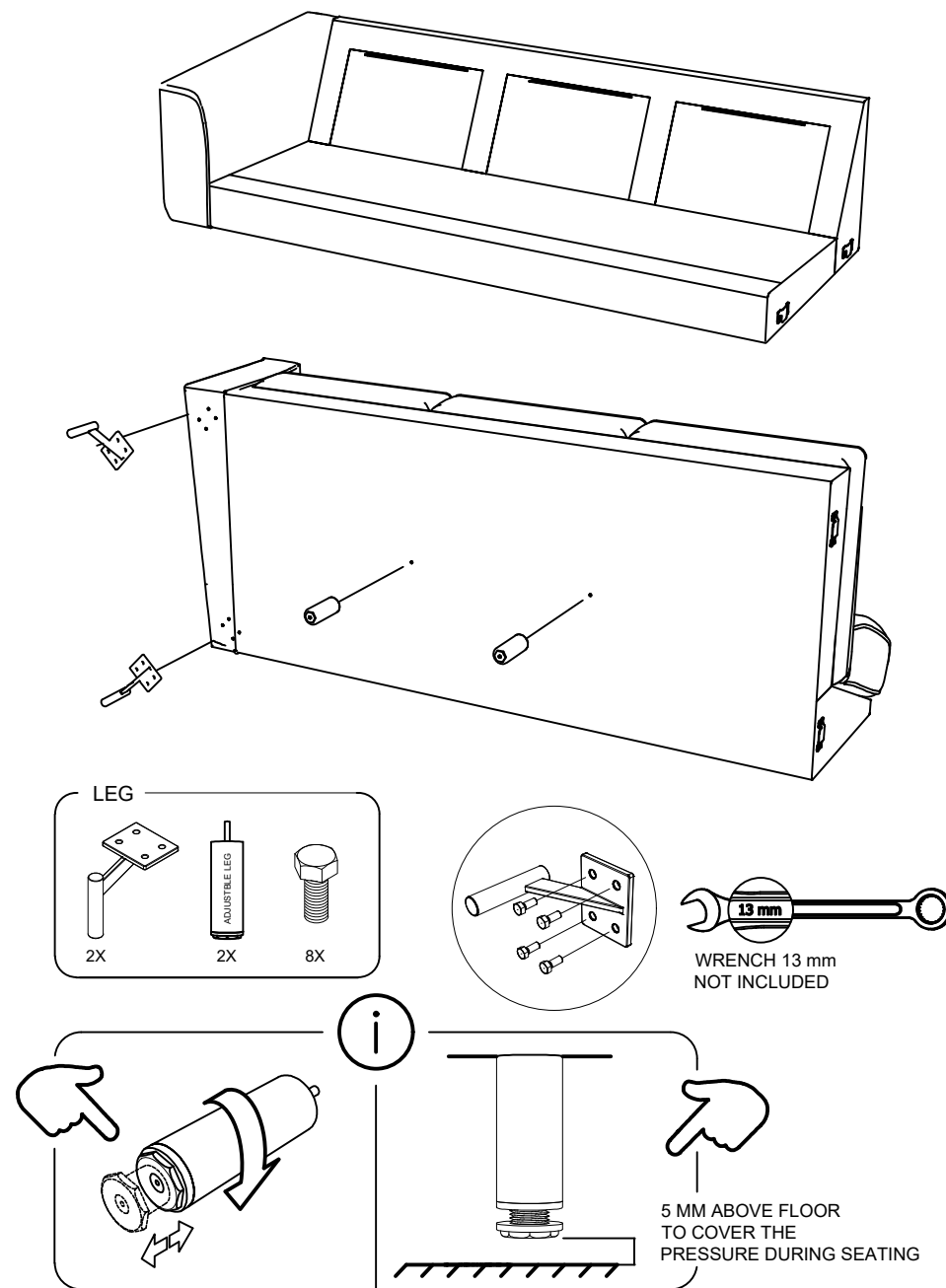
PUT ELEMENT ON HIS FEET, AND ASSEMBLE THE CUSHIONS  
BACK CUSHIONS ARE FIXED BY ZIPPER ON BACK  
OF CUSHION

- (1) SEAT CUSHION CORNER
- (2) BACK CUSHION CORNER BIG
- (3) BACK CUSHION CORNER SMALL



## ELEMENTS

### 3 SEATER ONE ARM



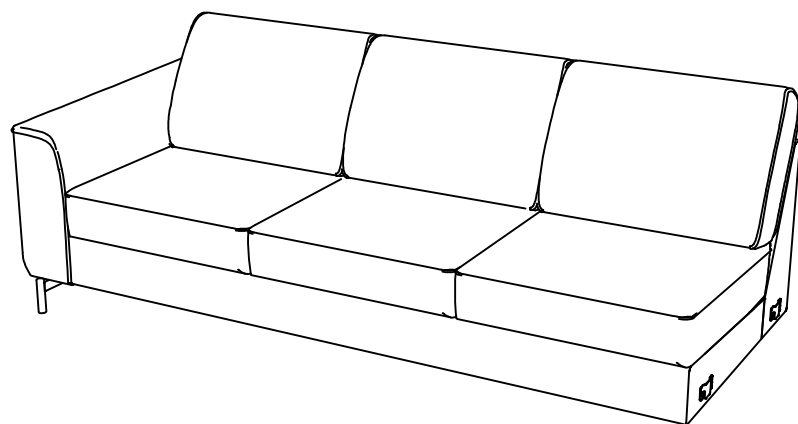
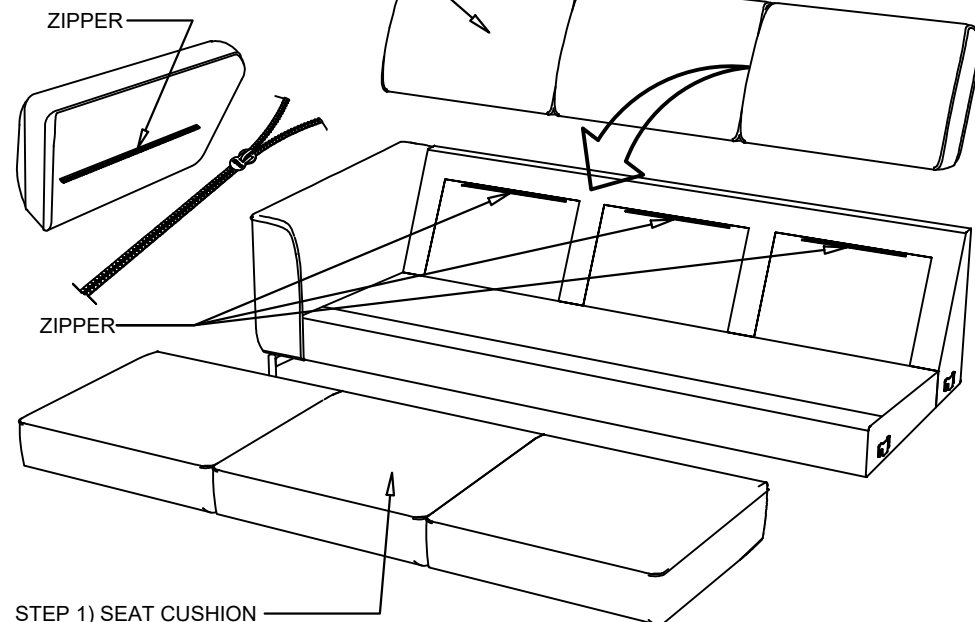
## ELEMENTS

### 3 SEATER ONE ARM

PUT ELEMENT ON HIS FEET, AND ASSEMBLE THE CUSHIONS  
BACK CUSHIONS ARE FIXED BY ZIPPER ON BACK  
OF CUSHION

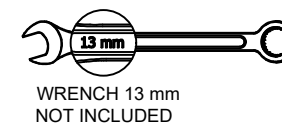
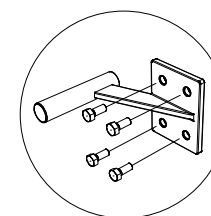
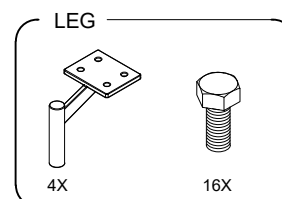
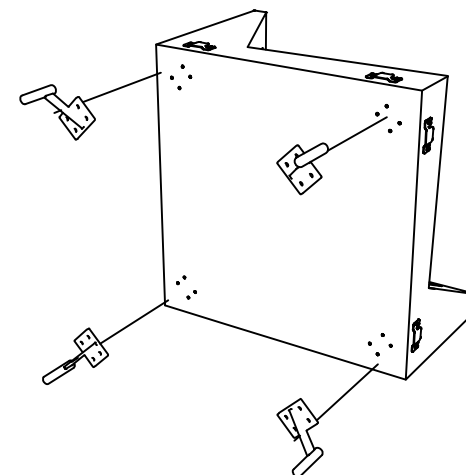
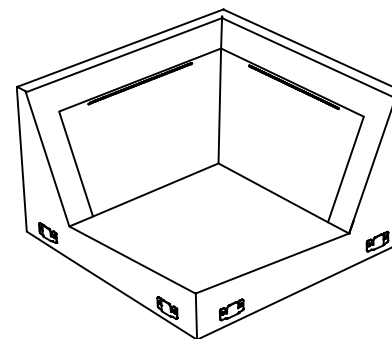
3 SEATER : 3 BACK AND SEAT CUSHIONS

STEP 2) BACK CUSHION



## ELEMENTS

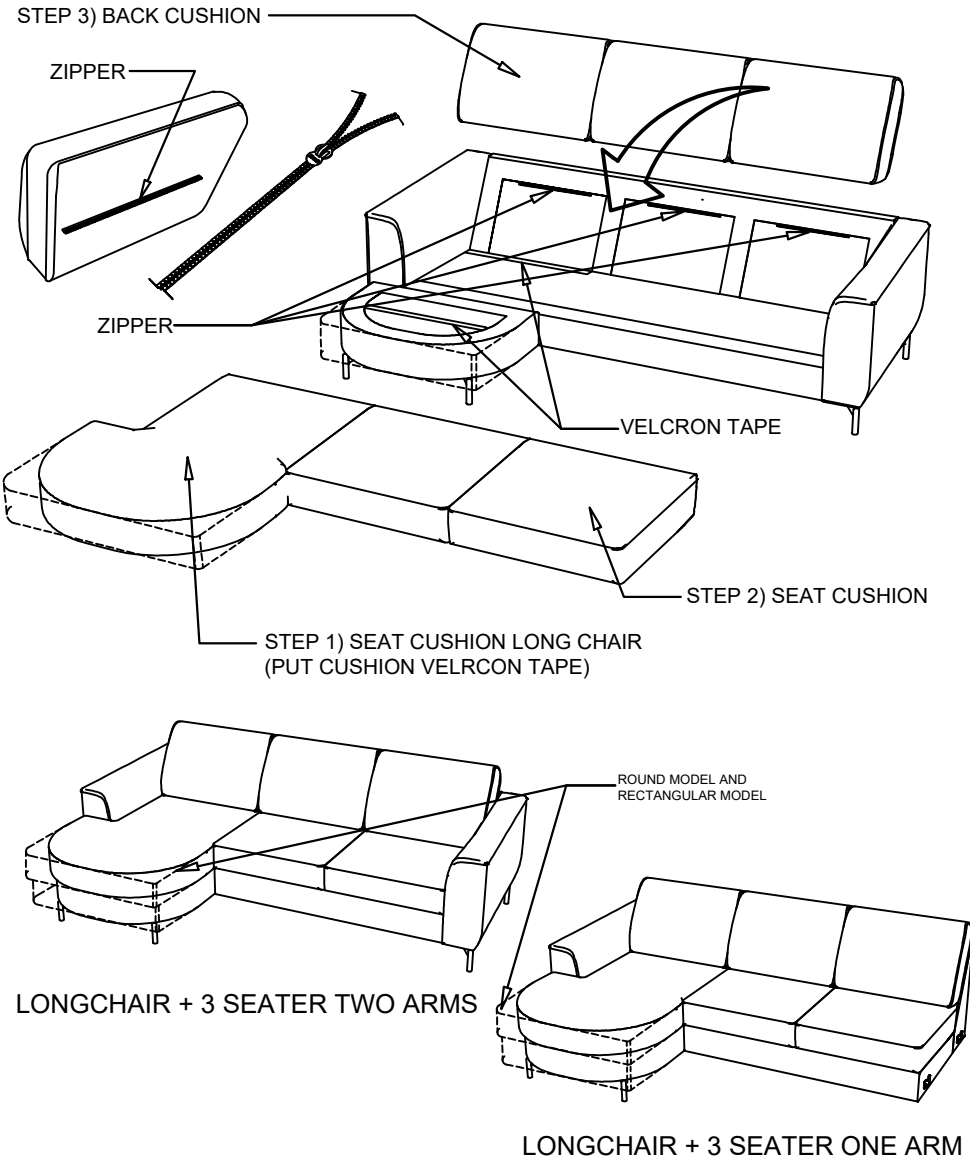
### CORNER



## ELEMENTS

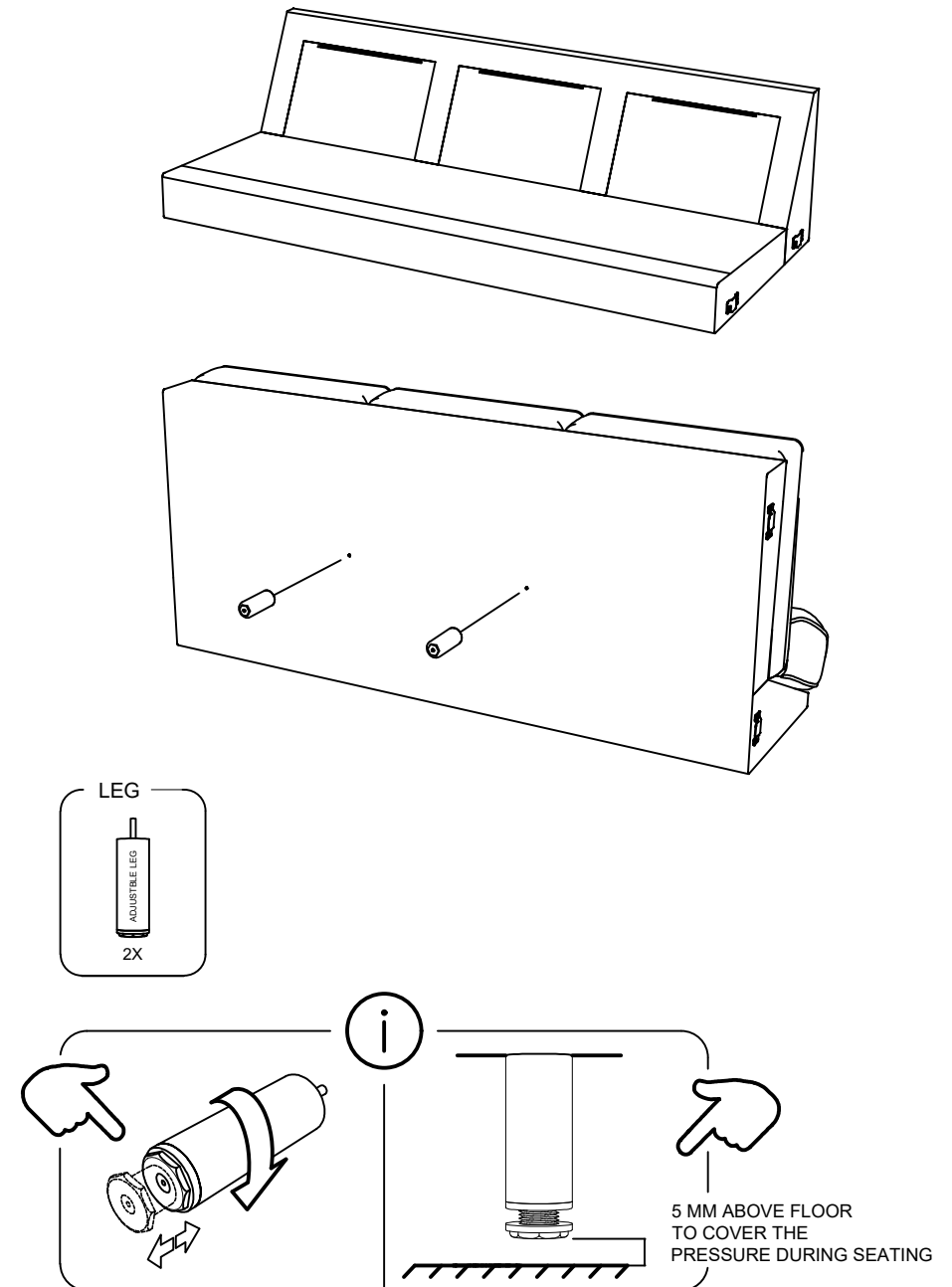
### LONGCHAIR + 3 SEATER ONE OR TWO ARMS

PUT ELEMENT ON HIS FEET, AND ASSEMBLE THE CUSHIONS  
BACK CUSHIONS ARE FIXED BY ZIPPER ON BACK  
OF CUSHION



## ELEMENTS

### 3 SEATER NO ARMS



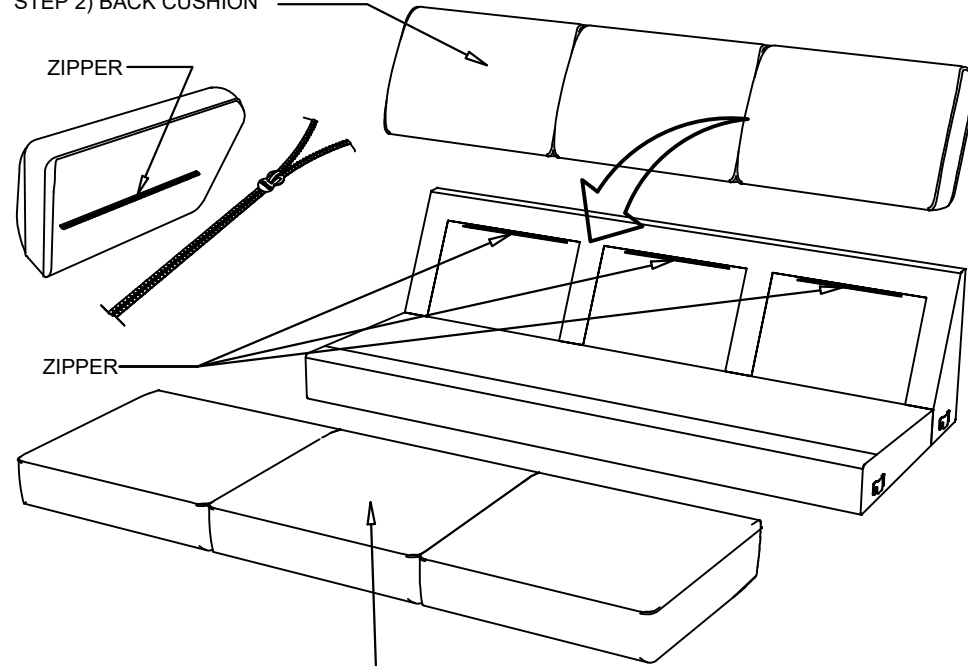
## ELEMENTS

### 3 SEATER NO ARMS

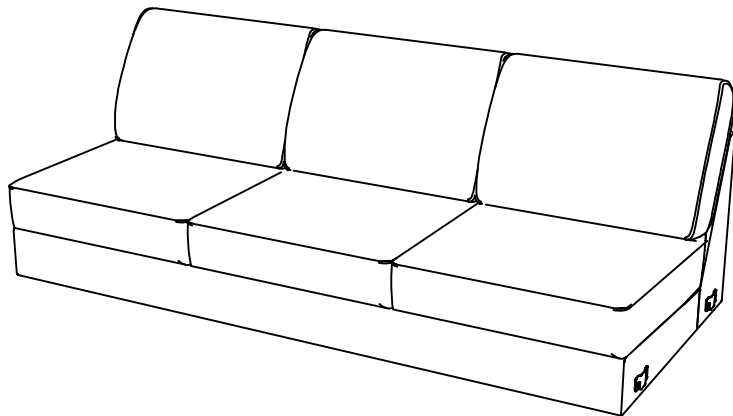
PUT ELEMENT ON HIS FEET, AND ASSEMBLE THE CUSHIONS  
BACK CUSHIONS ARE FIXED BY ZIPPER ON BACK  
OF CUSHION

3 SEATER : 3 BACK AND SEAT CUSHIONS

STEP 2) BACK CUSHION



STEP 1) SEAT CUSHION



## ELEMENTS

### LONGCHAIR + 3 SEATER ONE OR TWO ARMS

FOR ASSEMBLING LEGS 3 SEATER FOLLOW INSTRUCTION  
AS MENTION BEFORE

