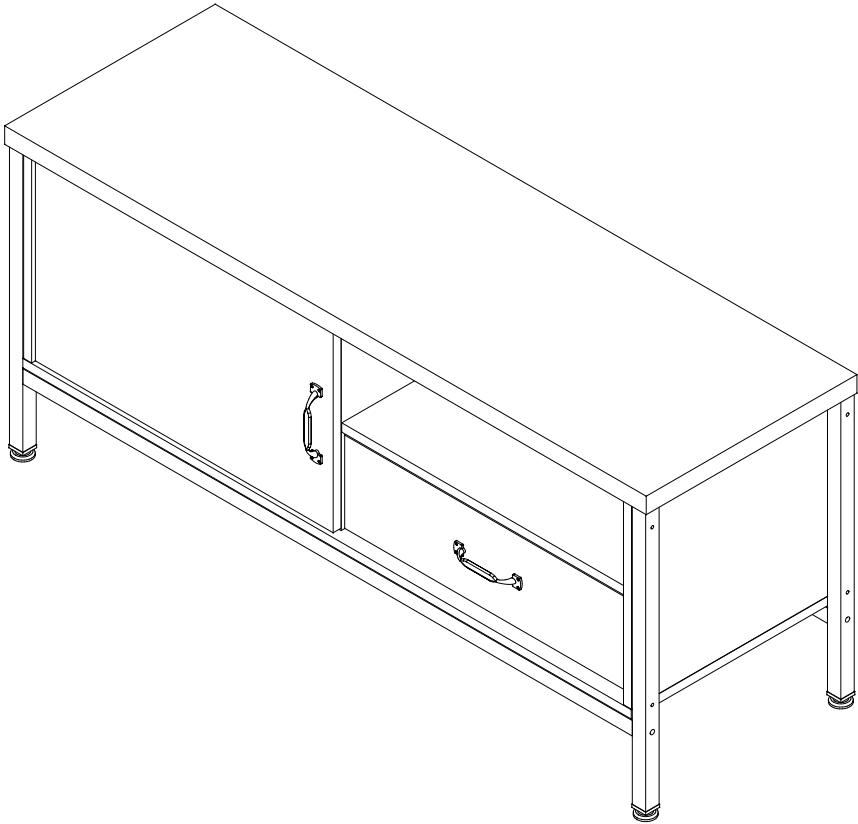
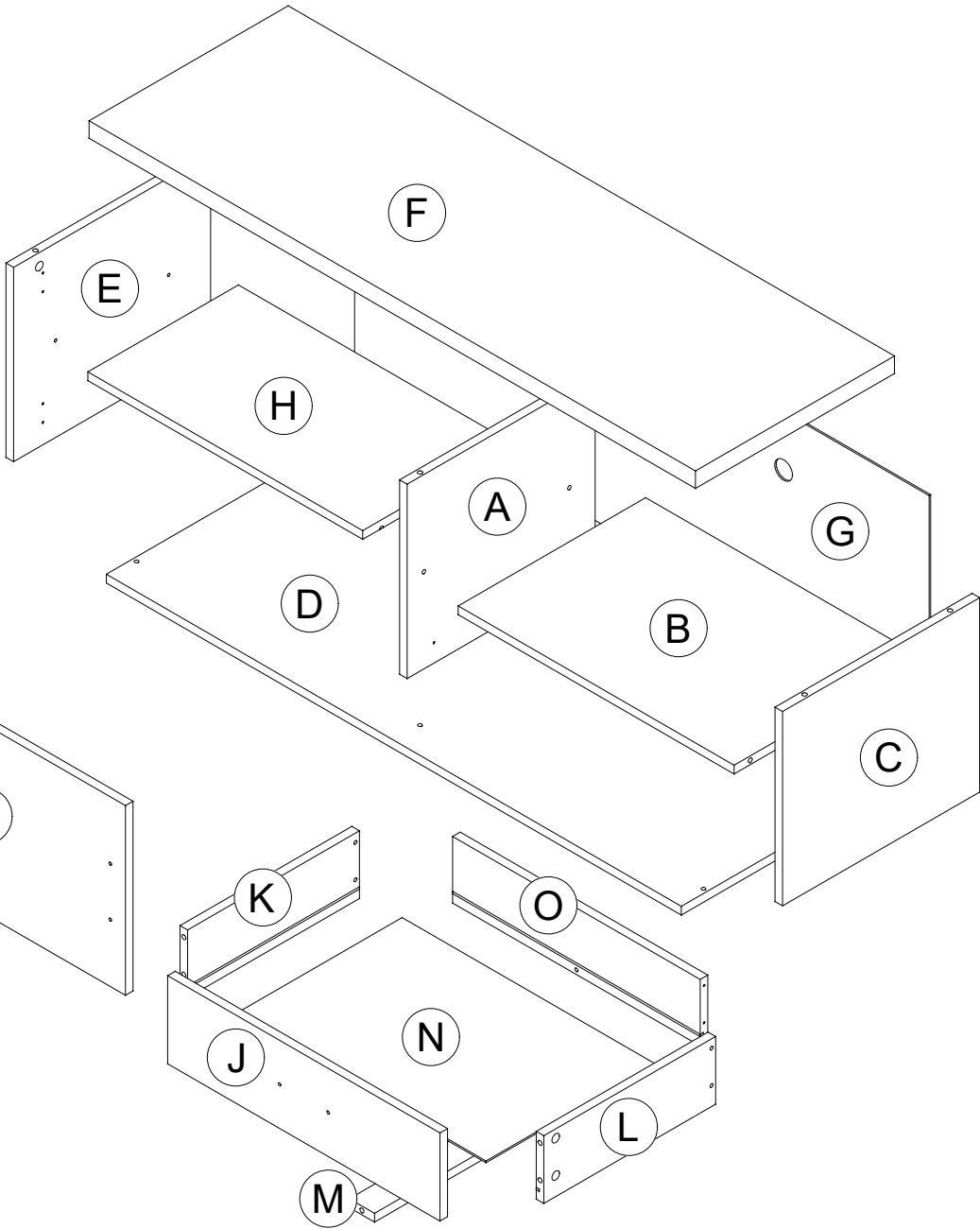


## PART LIST

CODE	QTY
A	1
B	1
C	1
D	1
E	1
F	1
G	1
H	1
I	1
J	1
K	1
L	1
M	1
N	1
O	1



## ASSEMBLY INSTRUCTIONS

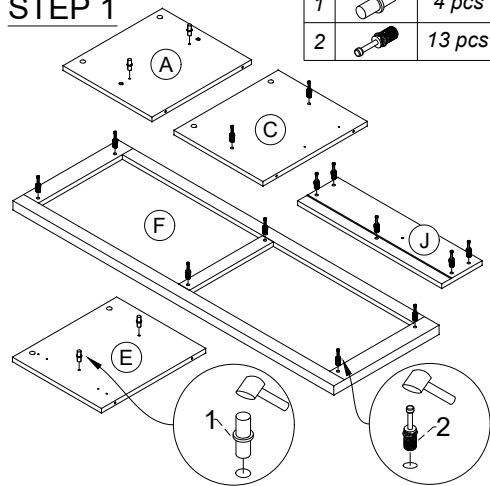
DO NOT FULLY TIGHTEN ANY BOLTS BEFORE ALL PARTS ARE LOOSELY ASSEMBLED. THE PRODUCT/FITTINGS MAY BE DAMAGED IF OVERTIGHTENED. BEWARE OF CROSS THREADING SCREWS AND BOLTS DURINGS ASSEMBLY. SMALL COMPONENT PARTS COULD CHOKE A CHILD IF SWALLOWED. WE STRONGLY RECOMMEND THAT YOU KEEP CHILDREN AWAY FROM THE WORK AREA.

MTL14

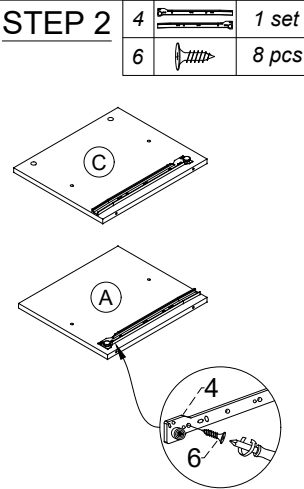
## HARDWARE LIST

1		Shelf Support 5x16mm	4 pcs
2		Minifix Bolt	13 pcs
3		Minifix Cam	13 pcs
4		Drawer Slide 14"	1 set
5		Drawer Slide 14"	1 set
6		Screw 3.5x12mm	8 pcs
7		Hinges 7/8"	2 pcs
8		Screw 3.5x16mm	18 pcs
9		Metal Leg - 484mm	4 pcs
10		Metal Leg - 1140mm	2 pcs
11		Metal Leg Adjust Screw	4 pcs
12		JCBC Screw 6x50mm	4 pcs
13		Allen Key M4	1 pc
14		Screw 6.3x50mm	8 pcs
15		Nail	24 pcs
16		Rattan Screw 8x20mm	4 pcs
17		Rattan Screw 8x38mm	14 pcs
18		Handle	2 pcs
19		Screw 4x19mm	4 pcs
20		Screw 4x38mm	5 pcs
21		Seal Sticker - 18mm	4 pcs

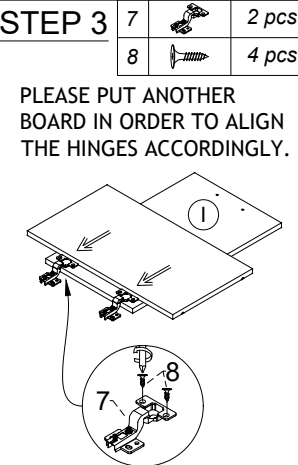
### STEP 1



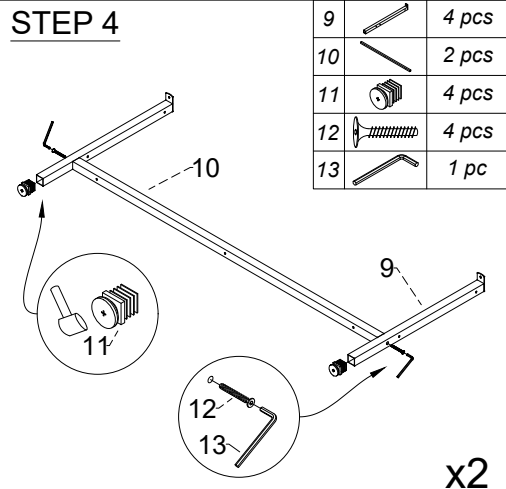
### STEP 2



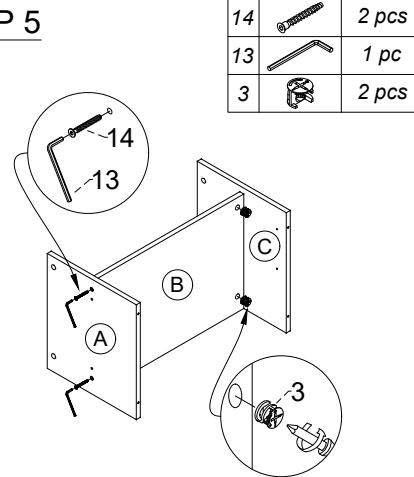
### STEP 3



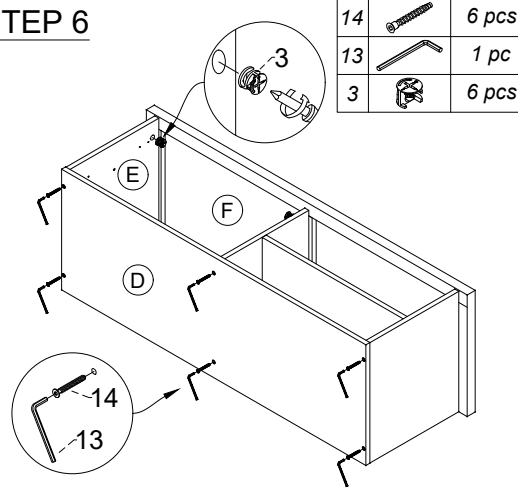
### STEP 4



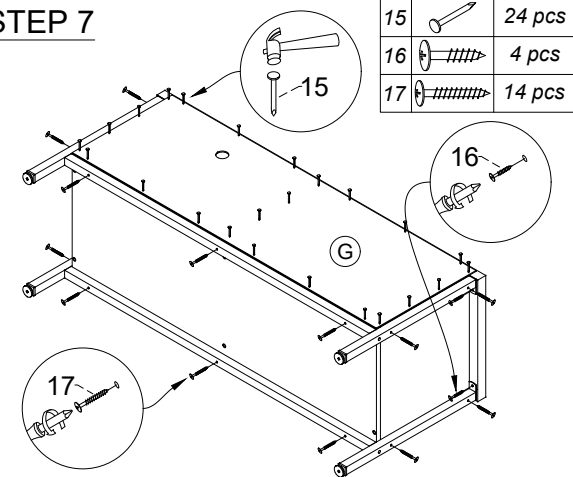
### STEP 5



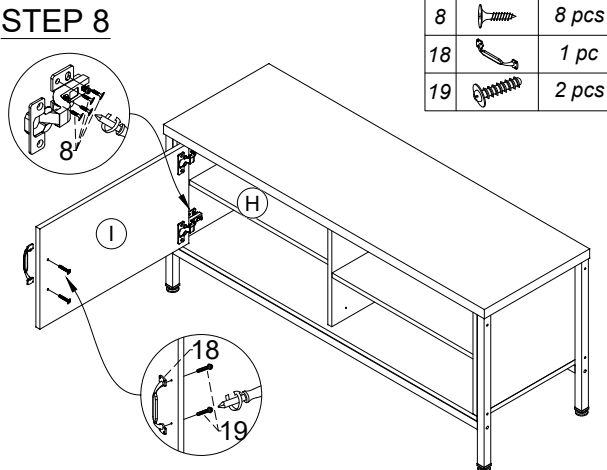
### STEP 6



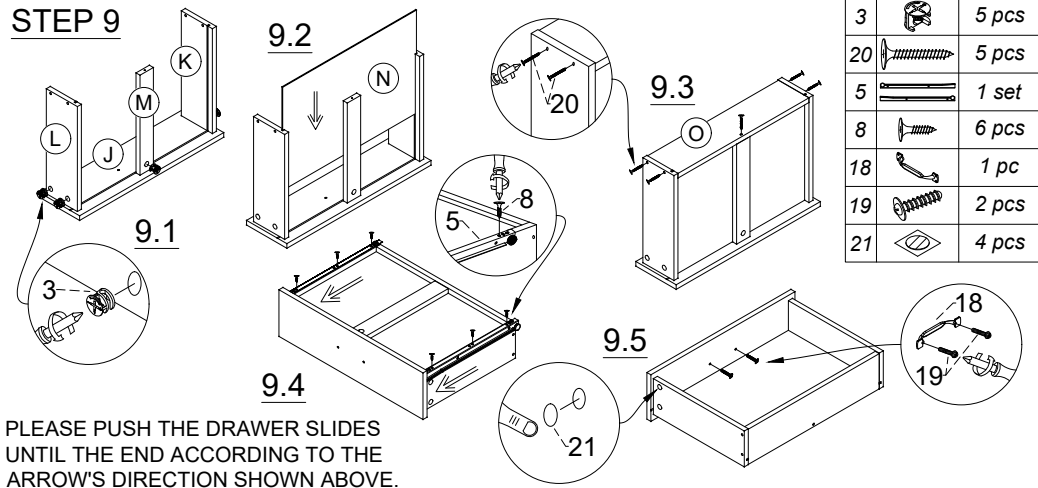
### STEP 7



### STEP 8



### STEP 9



### Important Note :

Please choose the correct screw hole before fitting the drawer runner.

### Minifix Setup :



- STEP 1 UNLOCK
- STEP 2
- STEP 3 LOCK

