

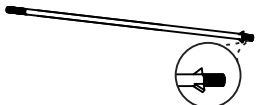
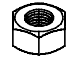

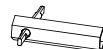

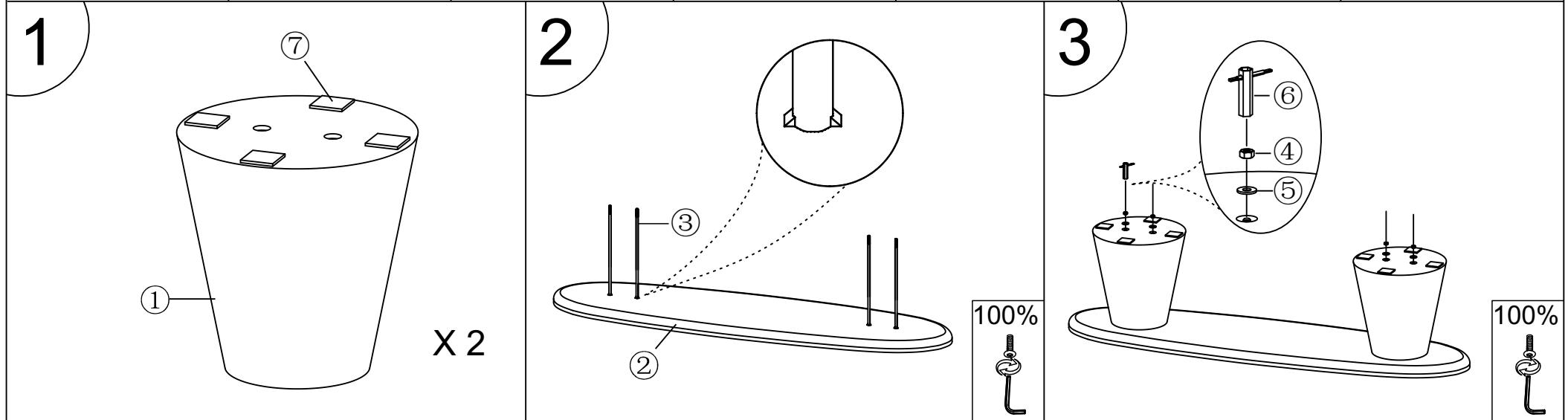


ASSEMBLY INSTRUCTION 2190

<p>①. Table base 2 PCS</p> 	<p>②. Table top 1 PC</p> 	<p>③. Screw 4 PCS M8x380mm</p> 	<p>④. Nut 4 PCS M8</p> 	<p>⑤. Washer 4 PCS M8xØ20mm</p> 	<p>⑥. Hexagonal hollow socket 1 PC M8</p> 	<p>⑦. Felt pad 8 PCS 50x50mm</p> 
--	--	--	--	---	---	--



After installing the dining teble,
turn it over and place it horizontaliy,
In case of hitting the ground.

